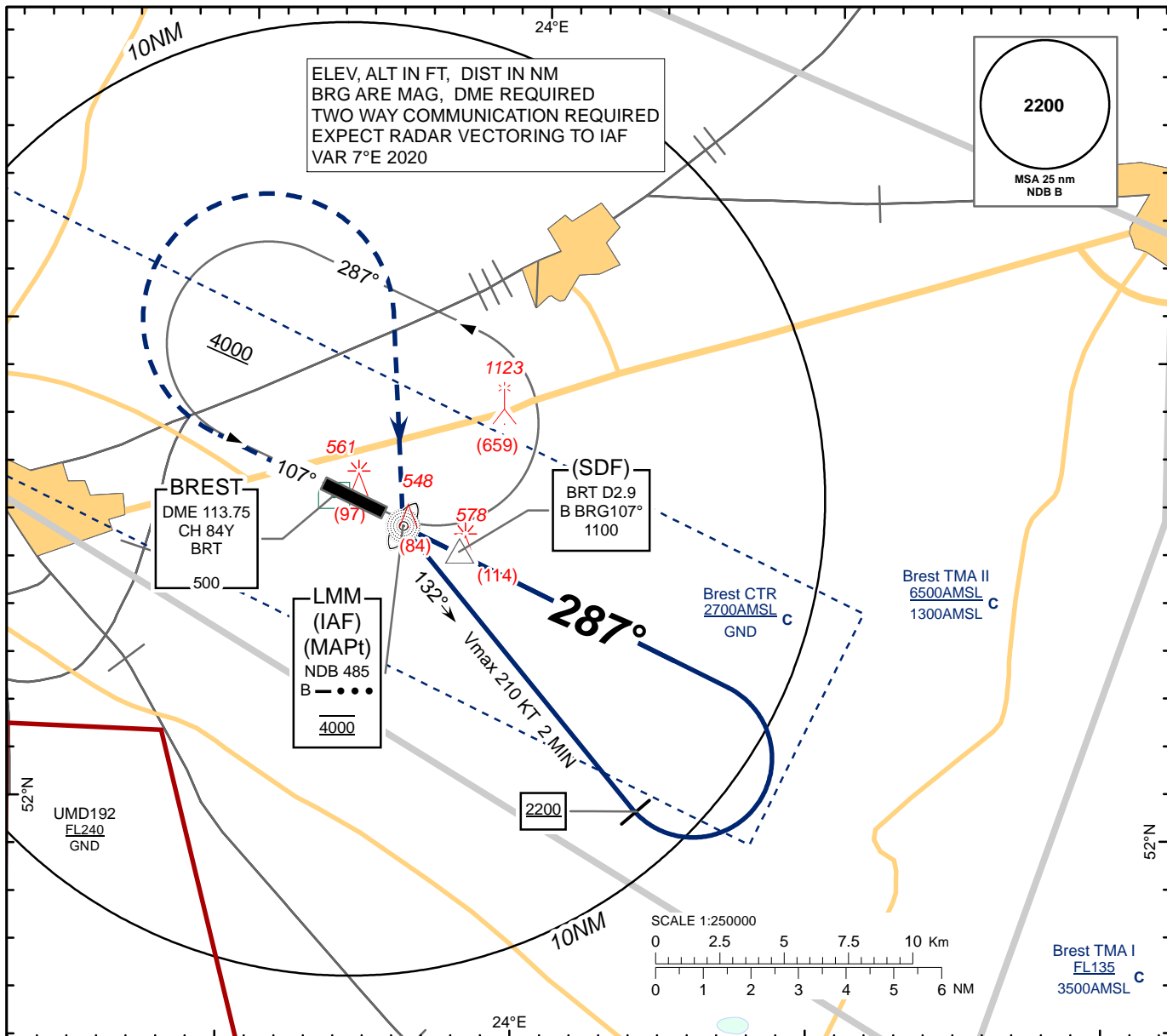


**INSTRUMENT  
APPROACH  
CHART - ICAO**

AERODROME ELEV 469  
HEIGHTS RELATED TO  
THR RWY 29 - ELEV THR 464

TWR 127.700  
MET 136.525 (EN)  
118.225 (RUS)

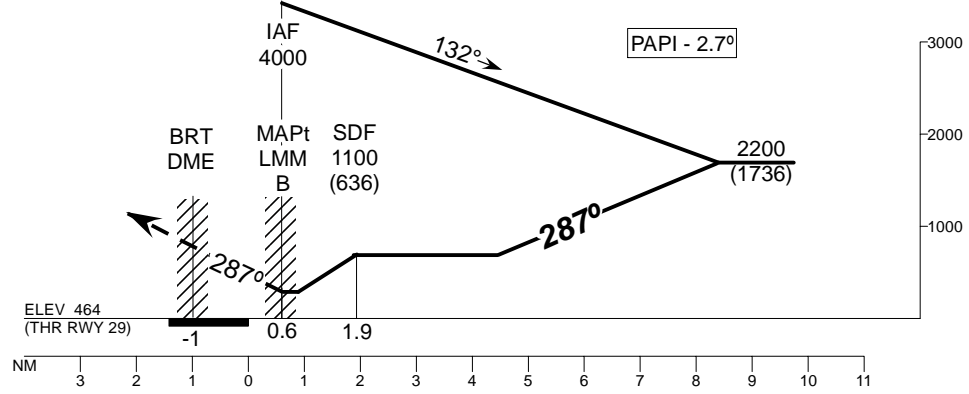
**BREST  
NDB  
RWY 29**



TRANSITION ALTITUDE: 6000

Alt set: hPa (mm on req)  
QNH (QFE on req)

**MISSED APPROACH**  
Climb on track 287°  
to 1500 (1036) or above  
turn RIGHT to (IAF) LMM "B"  
climbing to 2200 (1736)  
and follow ATC instructions.



CHANGE: New chart.

Aircraft Category		A	B	C	D
Straight-in Approach OCA(H)	with SDF		840 (370)		
	without SDF		990 (520)		
Circle - to - land		950 (480)	1420 (960)	1520 (1050)	1520 (1050)

BREST  
NDB  
RWY 29

**AERONAUTICAL DATA TABULATION**

<b>NDB approach to RWY29 from «B» LMM</b>	
<b>Fix/point</b>	<b>Coordinates</b>
(IAF), (MAPt) B LMM	520558.6N 0235540.3E
BRT DME	520633.7N 0235315.7E
(SDF) B BRG 107° D 2.9 BRT	520527N 0235735E
(TP) B BRG 132° V 210KT 2 MIN	520016N 0240349E
THR RWY 29	520612.51N 0235449.45E